



Copenhagen, 2026-01-20

EBE. Status and future plans

NAV Workshop Dairy Cattle

Johannes Heise & EBE Team

EBE – European Bovine Evaluation FMBA

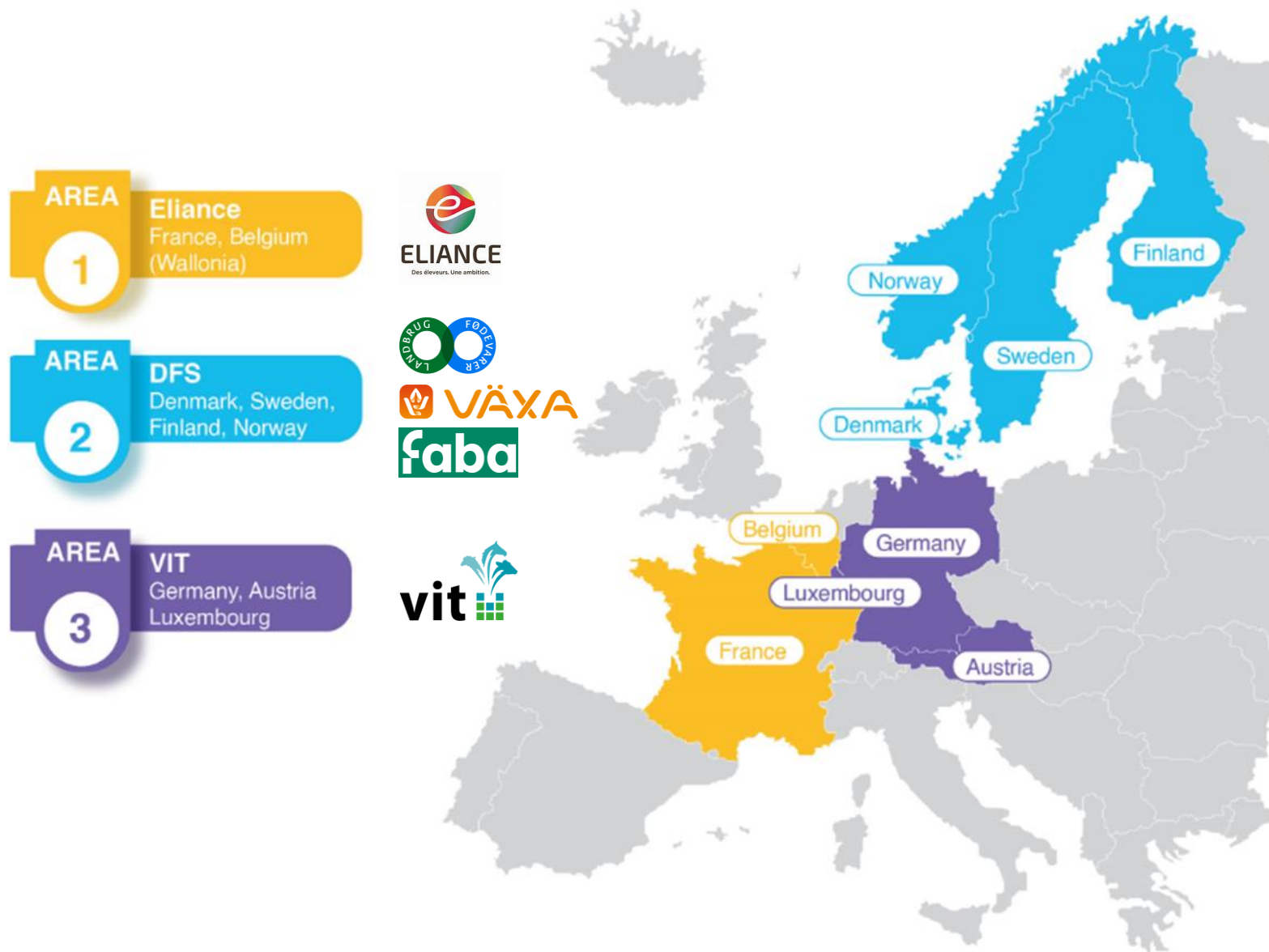
Agro Food Park 12, 8200 Aarhus N, Denmark
CVR No 45902366

Main aims

- 1) make EBVs of all animals directly comparable across participating countries
 - for individual traits
- 2) increase reliabilities of breeding values
- 3) make use of synergies
 - joint knowhow
 - cost reduction for routine genetic evaluations & new developments

EBE – European Bovine Evaluation FMBA

- Develop and run joint single-step evaluations for all partners
- First mission until 2028:
 - Holsteins
 - Interbull traits
 - health traits (udder, claws, metabolic, reproductional)
 - young stock survival
 - main evaluations + weekly evaluations
- Registered office
 - Agro Food Park 12
 - 8200 Aarhus N
 - Denmark



EBE – PARTNERS AND COUNTRIES

The bodies of EBE

General Assembly

Representatives of all partners

Decision Board

Representatives of all partners

Chair: Jean-Yves Dréau

Vice chair: Anders Levring

Technical Committee

EBE staff + 2-3 external persons

IP Breed Committee(s)

Managing Director

Team

6-10 Members

Members at the Decision Board

Partner	representative 1	representative 2
Eliance	Jean-Yves Dréau	Laurent Schibler
L&F, Faba, Växa	Anders Levring	Haifa Splittorff
vit	Reinhard Reents	Jens Baltissen

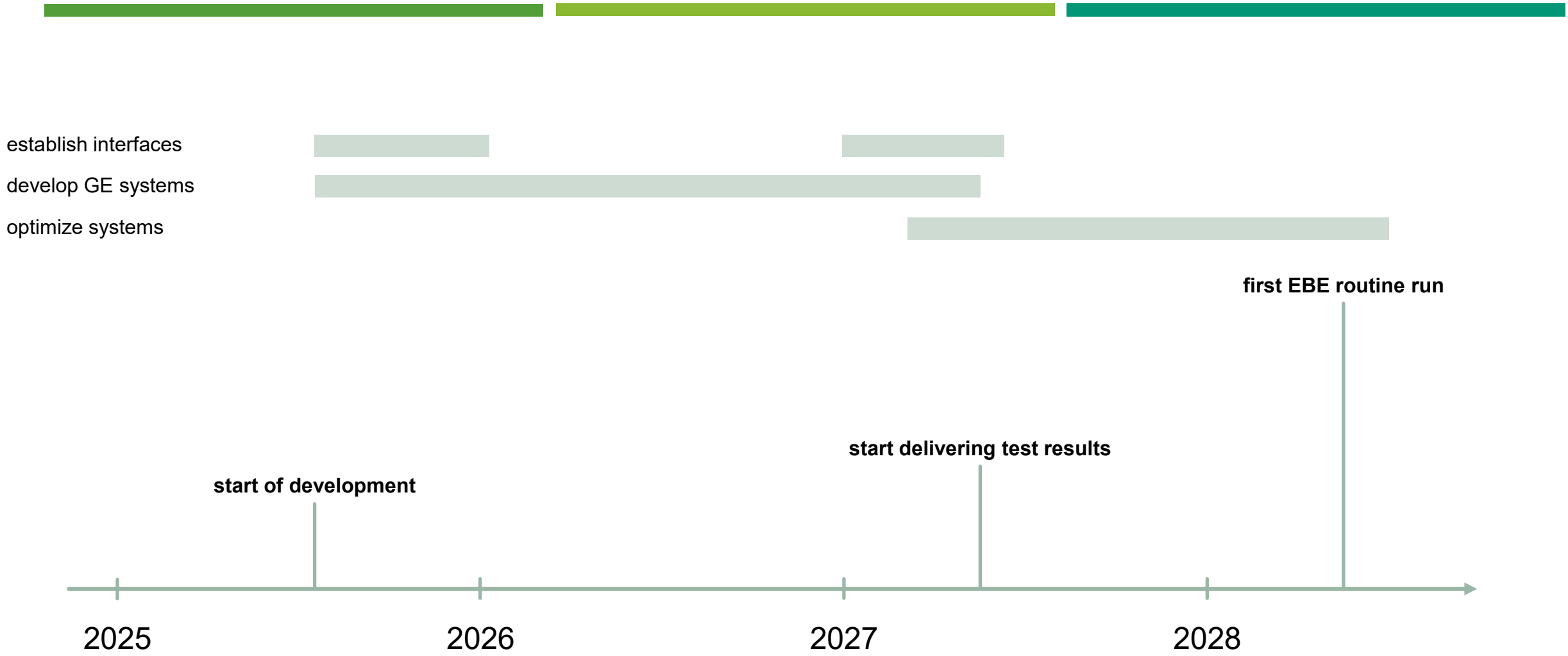
The EBE team

- highly skilled & experienced geneticists
- high degree of diversity
- familiar with international context of genetic evaluation in dairy cattle
- different backgrounds & focus areas
 - single step genetic evaluations
 - trait genetics
 - automation of genetic evaluation

as from Jan 2026:

Partner	N people	profession
DEU	3	geneticists
DFS	2	geneticists
FRA	2	geneticists
	1	organisational support

Schedule



Where are we?

- EBE founded as legal entity on 18 July 2025 ✓
- EBE IT infrastructure basic setup & configuration ✓
 - Rechenzentrum Verden GmbH (RZV in Germany; data center of vit)
- EBE team has begun work on 16 Sept 2025 ✓
 - full initial capacity from January 2026 on ✓
- tasks
 - data call ✓
 - development of EBE's systems ←

What will come after 2028?

- until 2030: add Jersey, Red Dairy Cattle, and Normande breeds
- add further traits → aim: cover all traits in the covered breeds
- stay open for additional growth
 - other breeds
 - new partners
 - new traits
 - implementation of (possibly yet unknown) research results

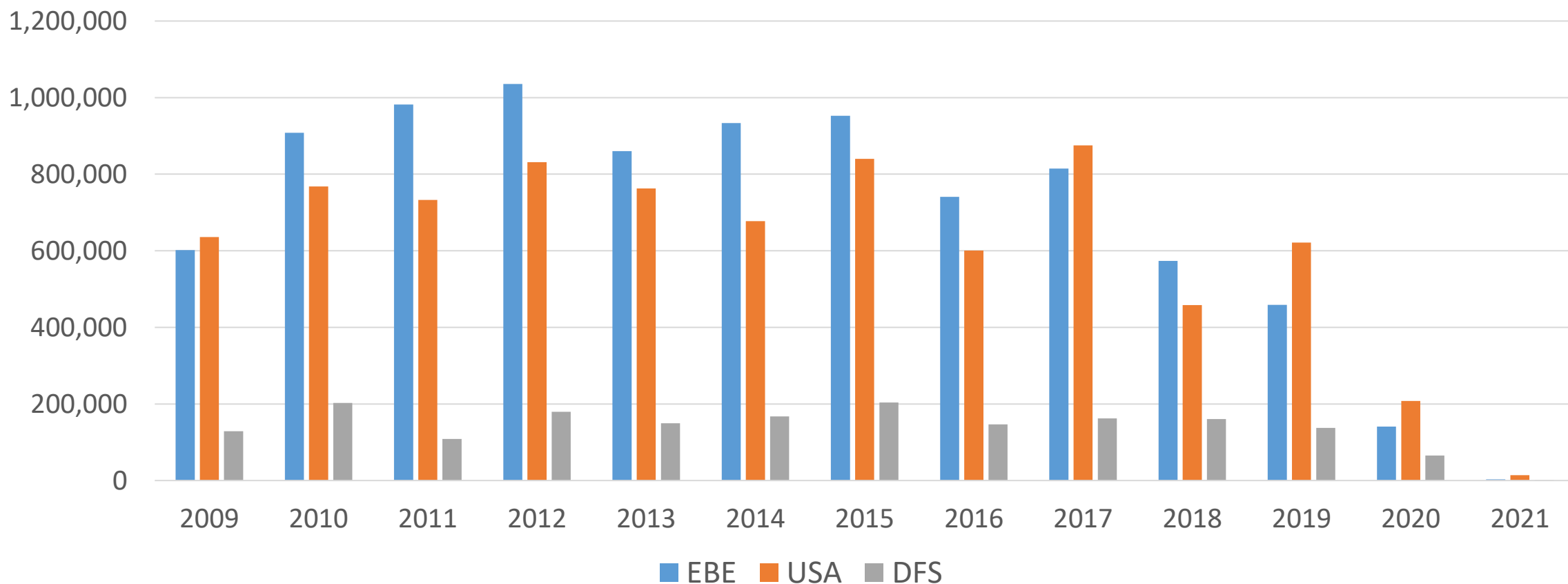
EBE perspectives

Frequently asked:

- How big will the population under genetic evaluation be in EBE?
- How will that compare to North America?
- We have not merged any data yet...
- approach: use Interbull information
 - **by sire: number of daughters reported** by the different countries
 - good proxy for the size of the population under genetic evaluation
 - Holstein breed group only
 - USA
 - EBE: DEU + DFS + FRA (incl. BEL)
 - numbers differ by trait group

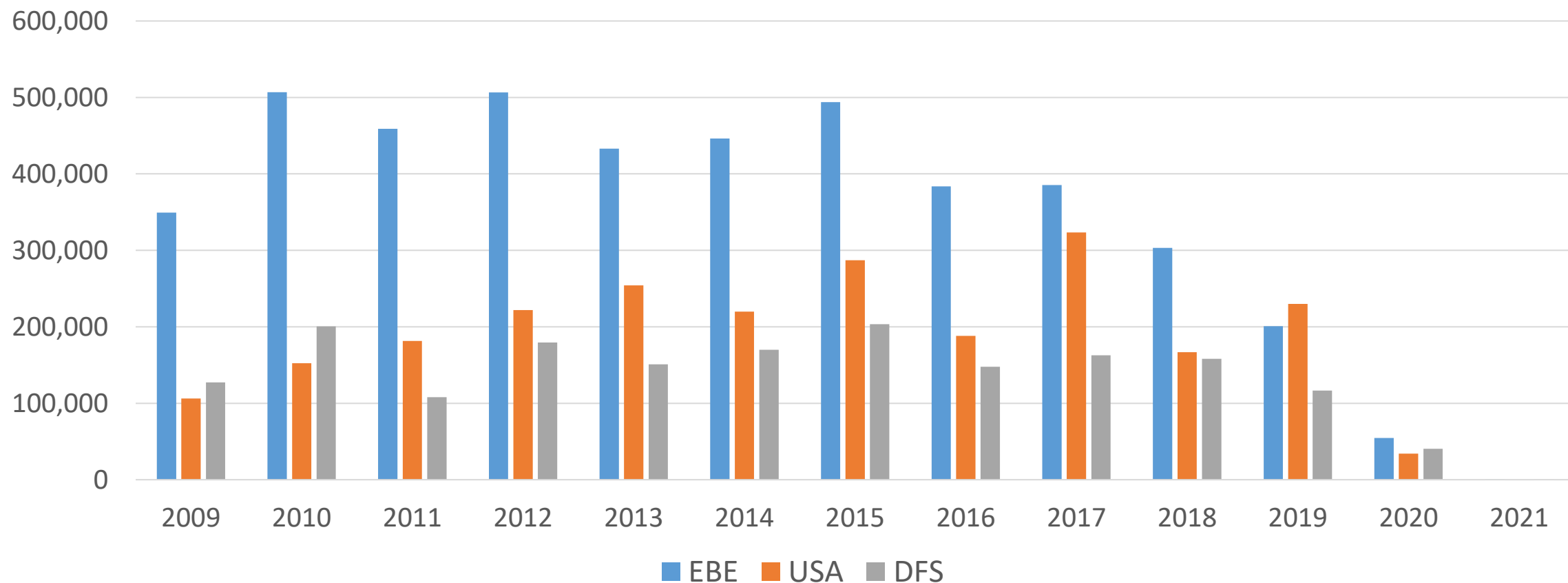
EBE perspectives

protein yield (kg)



EBE perspectives

mastitis*



* depends on country, if this only contains clinical mastitis

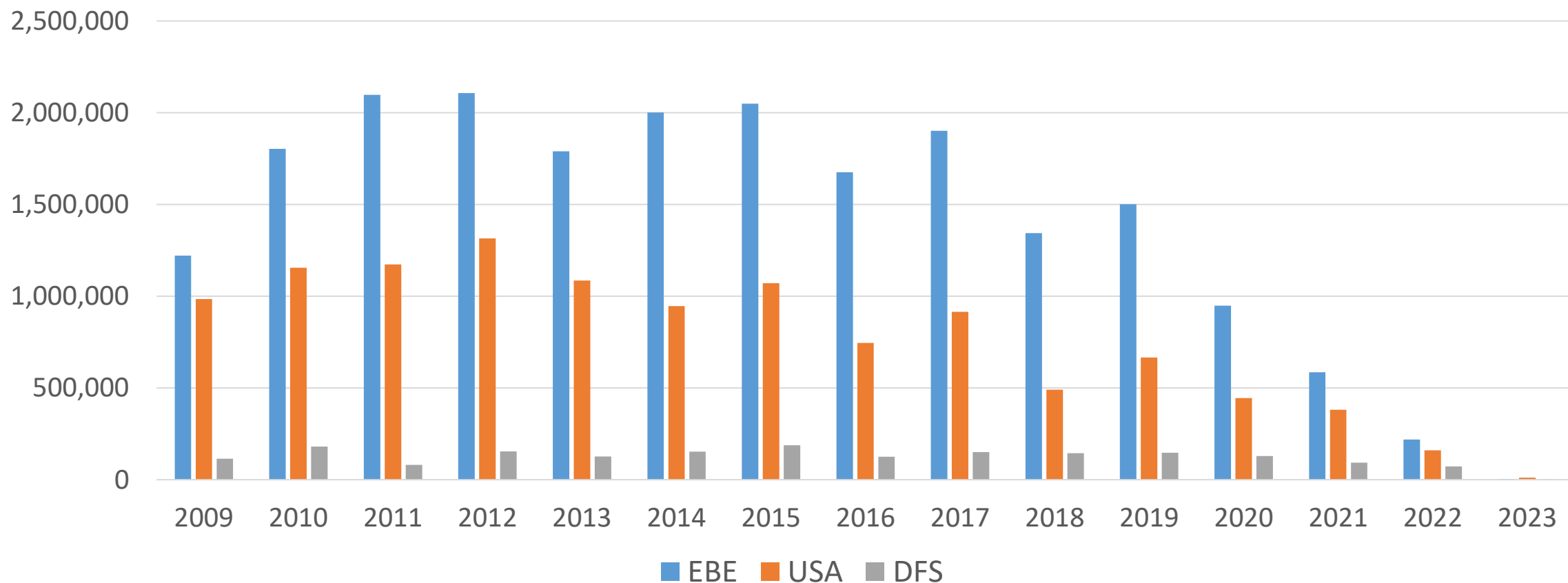
EBE perspectives

direct longevity



EBE perspectives

calving ease (direct)



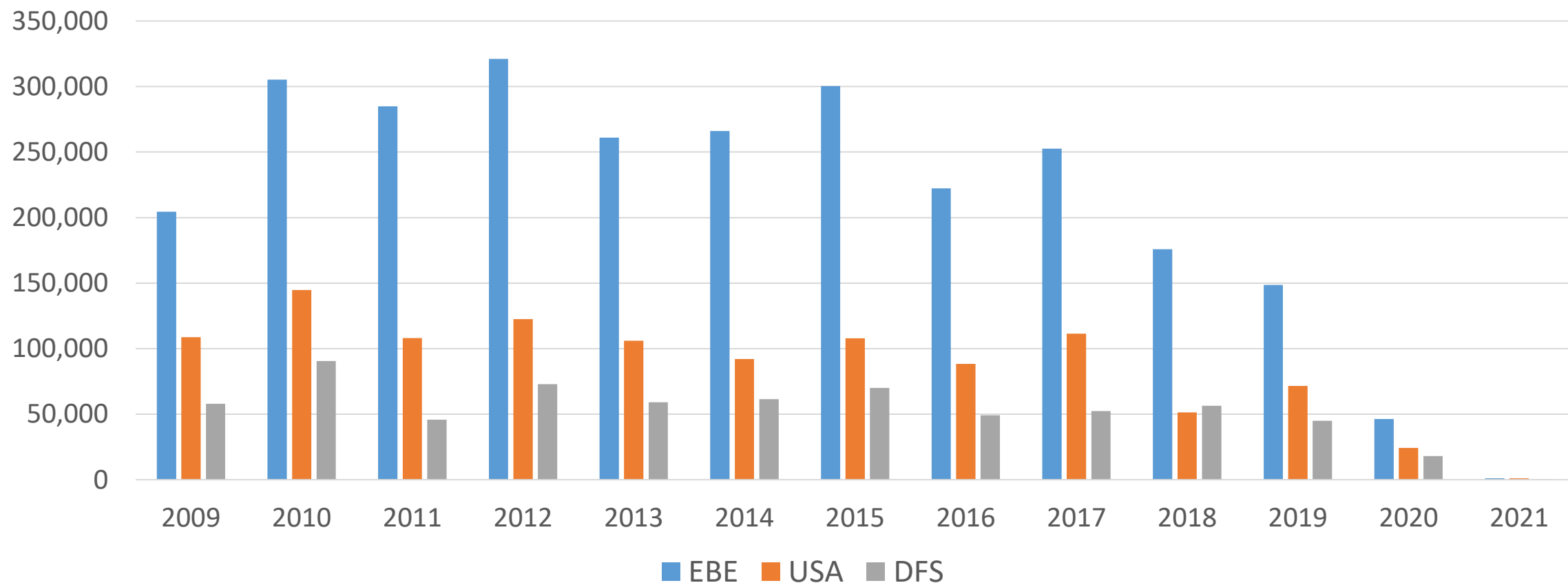
EBE perspectives

first to last insemination cow



EBE perspectives

stature



Summary & conclusion

- N cows in genetic evaluation
 - EBE will exceed USA for all established Interbull trait groups in most years
- of course: size matters, but not alone
- quality as well

A bit further in the future

And this will only be the beginning, because:

- we strive to win further partners in the future,
 - we will add further breeds, and
 - we will add further traits
-
- with EBE, we aim to set the ***European Standard*** for genetic evaluations of cattle
 - as we see, EBE has the potential to set the **World Standard** as well

Thank You!