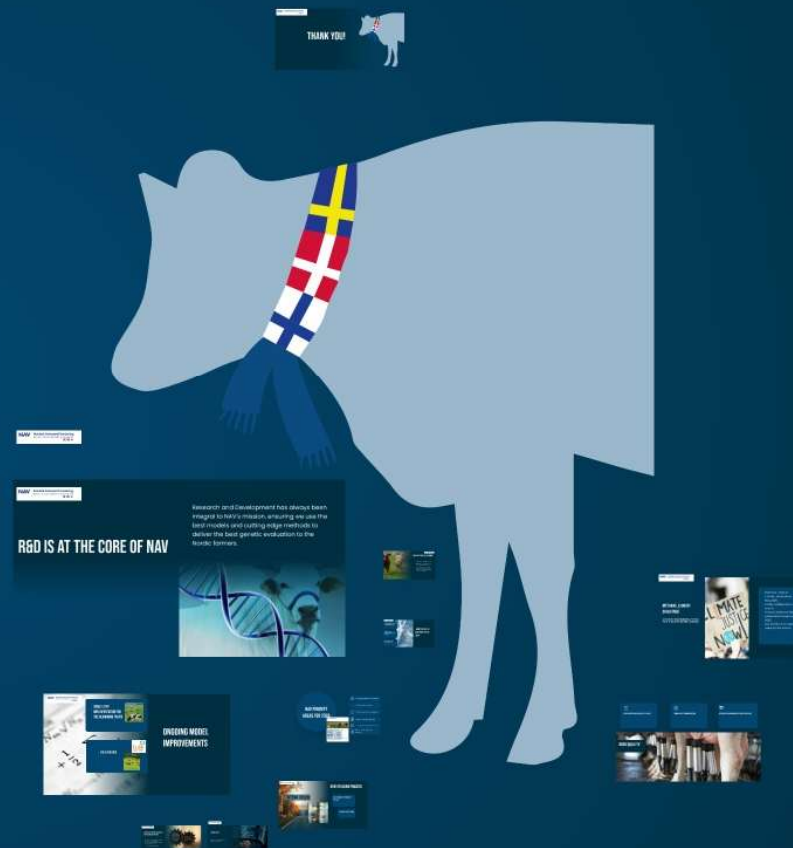


NAV PLANS 2026

Haifa Splittorff, NAV

NAV Dairy Workshop
20 January 2026, Copenhagen, Denmark



R&D IS AT THE CORE OF NAV

Research and Development has always been integral to NAV's mission, ensuring we use the best models and cutting edge methods to deliver the best genetic evaluation to the Nordic farmers.





R&D IN TIMES OF CHANGE

- It is and remains a strategic priority
- To maximise impact and efficiency, NAV needs to align its R&D with EBE.
- With EBE taking responsibility for Holstein evaluations, we adjust our focus to avoid overlapping work and invest in other priorities

**IT CHANGES OUR PRIORITIES IN TERMS
OF DEVELOPMENTS IN DAIRY HOL**

**WE NEED TO ADJUST OUR
INFRASTRUCTURE TO WELCOME THE
NEW PARTNER**

**EMPHASIS ON DATA QUALITY
AS A DATA PROVIDER TO EBE**



**IMPACT OF EBE ON
R&D PRIORITIES IN
2026**

NAV PRIORITY AREAS FOR 2026



fx Ongoing Model improvements

NTM revision process

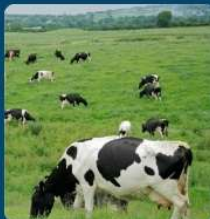
↔ EBE Data exchange pipeline

 Purebred beef & crosses

 Data & Service Quality focus

 New traits development,
Methane

SINGLE STEP IMPLEMENTATION FOR THE REMAINING TRAITS



YIELD FOR RDC



ONGOING MODEL IMPROVEMENTS

NTM 2028



NTM REVISION PROCESS

**DELIVERING FOR THE CURRENT
REVISION**

PLANNING FOR THE FUTURE

BUILDING SOFTWARE FOR ROUTINE DATA EXCHANGE WITH EBE

We need to create the tools to cope with this new collaboration, facilitate data exchange (upstream and downstream) and communication in the future





HELP IDENTIFYING DATA QUALITY ISSUES



FORMULATE RECOMMENDATIONS



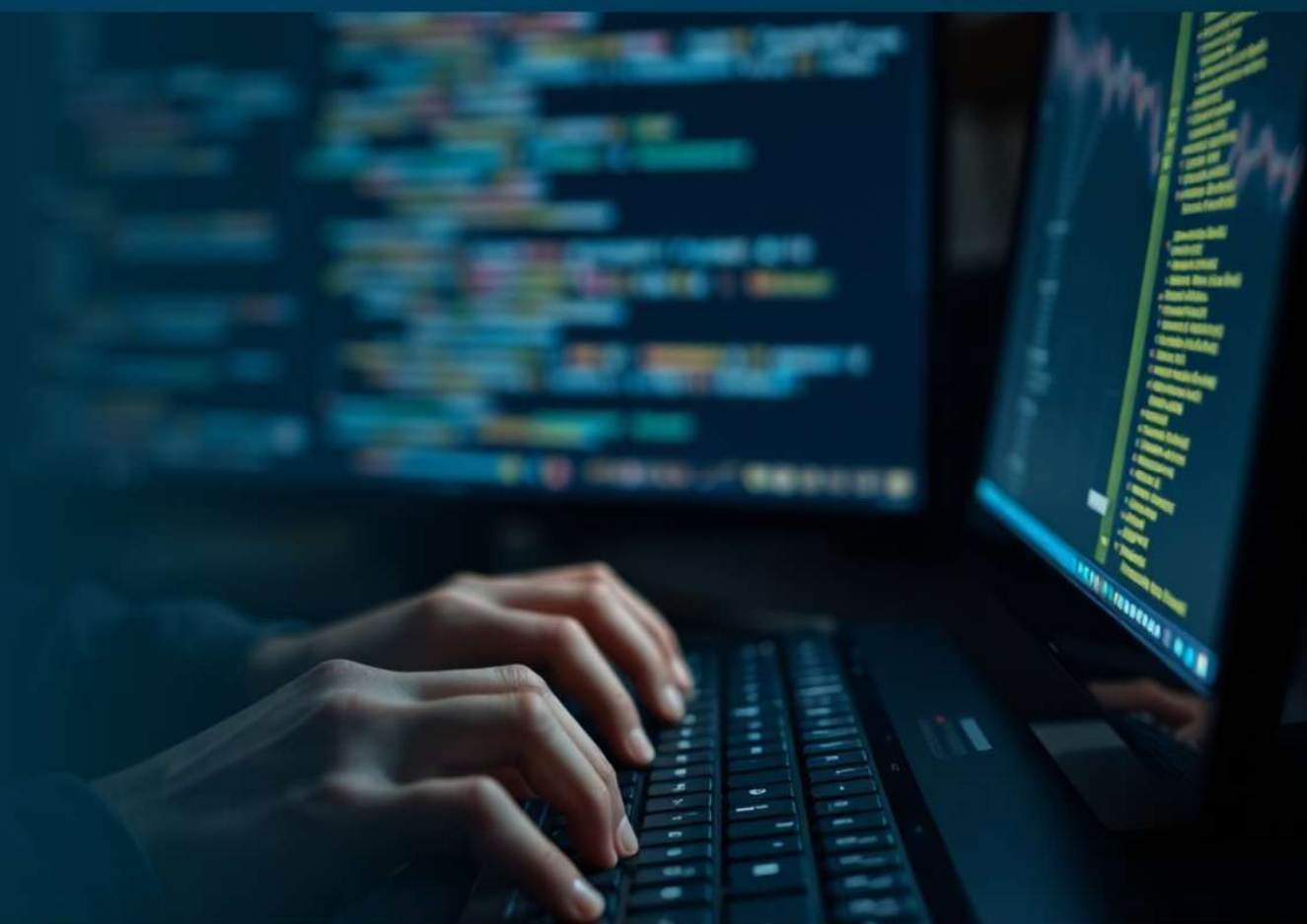
FACILITATE COORDINATION BETWEEN COUNTRIES



DATA QUALITY

SERVICE QUALITY

More efficient, modern and
robust processes



METHANE, CLIMATE CHALLENGE

CONTINUE STRENGTHENING AND EXTENDING NAV PORTFOLIO TO
PROVIDE THE FARMERS WITH TOOLS TO MEET NEW CHALLENGES.



- Methane Index for Holstein Males since May 2025
- Nordic collaboration is crucial
- A Nordic Methane WG active since November 2025
- Our priority is to create value for the farmer



THANK YOU!

